

# Automated Rotoscoper /Cel-Shader

Ethan Johanson  
Peter Gao  
Alannah Darnel



Inspiration

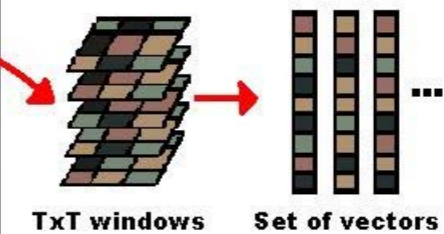
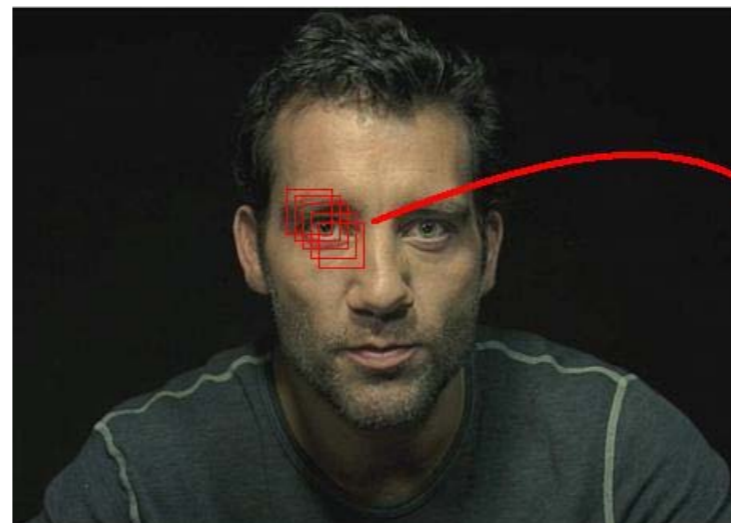
# Researched Techniques





# Keyframe Contours

# Image Segmentation via Entropy Coding



# Our Approach

- Edge Detect to generate region outlines (Sobel)
- Apply threshold operation to make solid outlines
- Region select based on sobel output
- Average colours of interior regions
- Reapply Outlines

# Our Result

