

PhyloDex User Guide

Viewing Your Phylodex Entries



At the bottom of the detail view there is a Crop Image Button that you can tap on.



Selecting Crop will bring you to a view where you can zoom and pan to crop your image for that entry.



Tapping Done will bring you back to the entry with the newly cropped photo.

Managing Your Phylodex Entries



Your Main Menu presents a scrollable list of all your current entries.



Selecting Edit will bring up deletion icons for every entry in the list.



Tapping on the deletion icon will slide in a deletion confirmation button.



Tapping on the deletion confirmation button will remove that entry from your Phylodex database.

Searching for Animal Info



The Search mode accessible from the bottom tab bar presents a simple field to enter creature names to lookup.



Selecting the search field will bring up the keyboard for text entry. Tapping clear will empty the field.

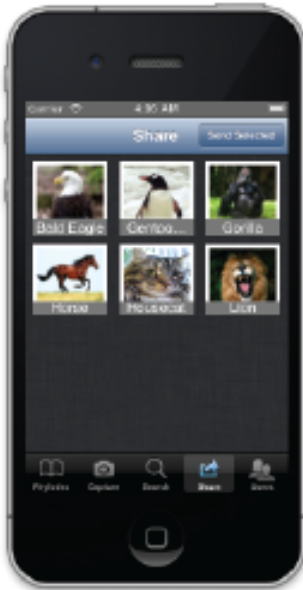


Selecting search after entering a query will perform a search and display a list of potential results.

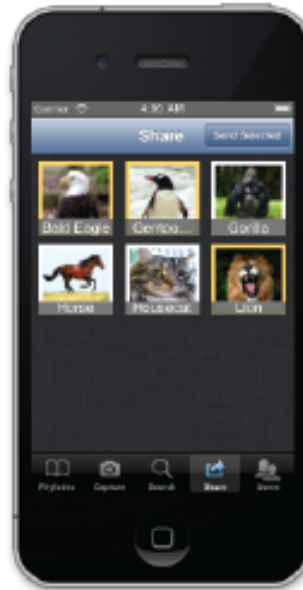


Selecting an entry from the list will present the creature's image and some information about it.

Sharing Your Phylodex Entries



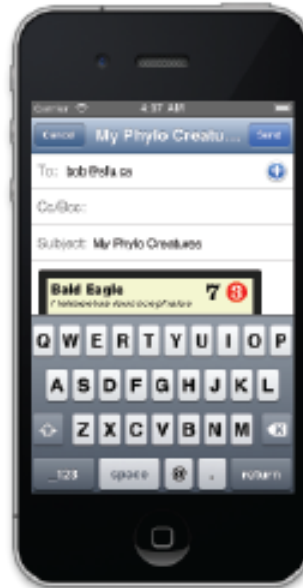
The Share mode accessible through the bottom tab bar presents a photo collection of all of your entries



Tapping on items in the collection will highlight them with a yellow-orange border. Tapping again will deselect.



Selecting the Send button in the navigation bar will bring up an email view with the entries' info pre populated and attached

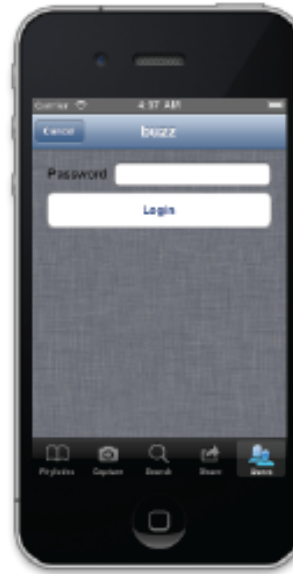


After entering an addressee, you can Send the email using the account on your iOS device, or cancel the message.

Logging into an account



In the user mode accessible from the bottom tab bar, users created on this device and an admin account are available to log into



Selecting a user will bring up their login screen, where you can cancel or enter the correct password to login and gain access in the app to your account's data.

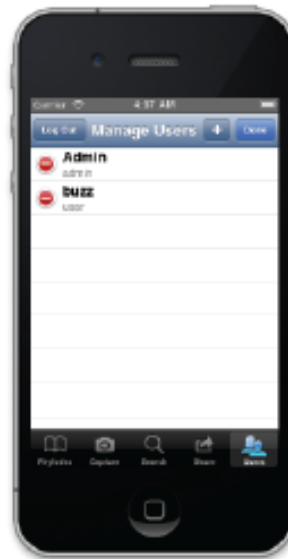


After logging in you can adjust your own settings or logout

Managing Users



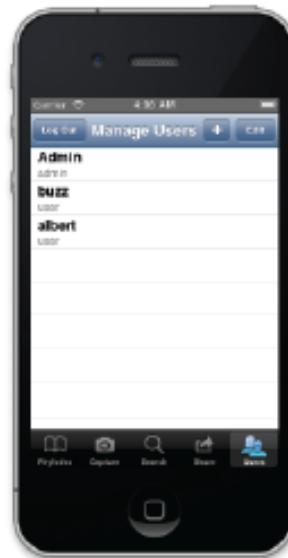
Logging into the admin account from the user mode presents you with a manageable list of existing users



Selecting Edit will bring up deletion icons for every entry in the list. These function much the same as the Phylodex tutorial.



Tapping on the + icon will allow you to create and add a new user account.



Tapping on create will generate and add that user to the user database, able to be logged into and take pictures.